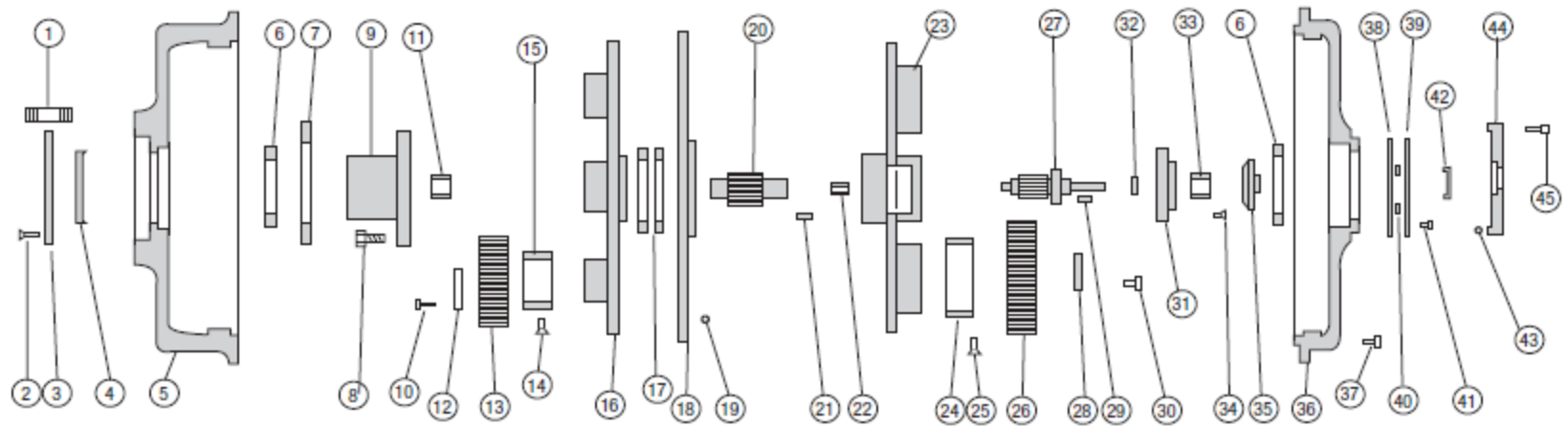


# Rev Tech LC - Aftermarket Parts for SA-70 Gearbox



Item#	Part#	Description	Qty	Item#	Part#	Description	Qty
1	N/A	Stud 1"- 8 x 3 3/4"	8	26-B	N/A	1st Stage Planet Gear 82:1	2
2	190200	FH SHCS 1/4" - 20 x 1"	8	26-C	N/A	1st Stage Planet Gear 118:1	2
3	N/A	Seal Retainer	1	27	N/A	1st Stage Pinion 22:1	1
4	190400	Oil Seal	1	27-A	N/A	1st Stage Pinion 39:1	1
5	N/A	2nd Stage Ring Gear	1	27-B	N/A	1st Stage Pinion 82:1	1
6	190600	Bronze Centerline Bearing	2	27-C	N/A	1st Stage Pinion 118:1	1
7	190700	Bronze Thrust Washer	1	28	N/A	Retainer	2
8	190800	SHCS 3/4" -16 x 1-1/4"	8	29	N/A	Key	1
9	190900	Spline (Coarse)	1	30	191000	Cap Screw 3/8" - 16 x 5/8"	6
9-A	N/A	Spline (Fine)	1	31	N/A	Bearing Retainer	1
10	191000	Cap Screw 3/8 -16 x 5/8"	9	32	193200	Snap Ring 5100 - 125	1
11	191100	Bronze Bearing (Spline)	1	33	193300	1st Stage Bronze Retainer Bearing	1
12	N/A	Retainer	3	34	193400	SHCS 1/2" - 13 x 7/8"	4
13	N/A	2nd Stage Planet Gear	3	35	193500	Bronze Oil Pump Bushing (Tapered)	1
14	191400	FH SHCS 7/16" -14 x 3/4"	3	35-A	193501	Bronze Oil Pump Bushing (Square)	1
15	191500	2nd Stage Bronze Gear Bearing	2	36	N/A	1st Stage Ring Gear 22:1	1
16	N/A	2nd Stage Cage (3-Gear)	1	36-A	N/A	1st Stage Ring Gear 39:1	1
16-A	N/A	2nd Stage Cage (2-Gear)	1	36-B	N/A	1st Stage Ring Gear 82:1	1
17	191700	Bronze Center Plate Bearing	2	36-C	N/A	1st Stage Ring Gear 118:1	1
18	N/A	Center Plate	1	37	193700	SHCS 3/8" - 16 x 1 1/2"	15
19	191900	O'Ring 471 H70	1	38	N/A	Inner Disc	1
20	N/A	2nd Stage Pinion	1	39	N/A	Outer Disc	1
21	N/A	Key	1	40	N/A	Spacer	4
22	192200	1st Stage Bronze Pinion Bearing	1	41	194100	BH SHCS 1/4" - 20 x 3/8"	4
23	N/A	1st Stage Cage	1	42	194200	Oil Seal	1
24	192400	1st Stage Bronze Gear Bearing	2	43	194300	O'Ring 450 H70	1
25	192500	FH SHCS 7/16" -14 x 3/4"	2	44	N/A	Cover	1
26	N/A	1st Stage Planet Gear 22:1	2	45	194500	SHCS 1/4" - 20 x 7/8"	8
26-A	N/A	1st Stage Planet Gear 39:1	2				

\* Rev Tech LC is an independent centrifuge gearbox part supplier for various OEM companies and is not affiliated with these OEM companies.